

Please carefully read and save these instructions before attempting to assemble, maintain, install, or operate this product. Observe all safety information to protect yourself and others. Failure to observe the instructions may result in property damage and/or personal injury. Please keep instructions for future reference.

## Important Operating Instructions



## 22 TON LOG SPLITTER

**Model: 6212**

### CALIFORNIA PROPOSITION 65

**WARNING:** You can create dust when you cut, sand, drill or grind materials such as wood, paint, metal, concrete, cement, or other masonry. This dust often contains chemicals known to cause cancer, birth defects, or other reproductive harm. Wear protective gear.

**WARNING:** This product or its power cord may contain chemicals, including lead, known to the State of California to cause cancer and birth defects or other reproductive harm. Wash hands after handling.

### Important!

When using equipment, a few safety precautions must be observed to avoid injuries and damage. Please read the complete operating manual with due care. Keep this manual in a safe place, so that the information is available at all times. If you give the equipment to any other person, give them these operating instructions as well. We accept no liability for damage or

accidents which arise due to non-observance of these instructions and the safety information herein.

### SPECIFICATIONS

**Max Pressure:** 3500 PSI  
**Max Flow:** 10.8 gp  
**Hydraulic Fluid Type:** 2.5 gallons of 10wt AW32, ASLE H-150 or ISO32.  
**Coupler Size:** 2 inch ball  
**Max Log Length:** 24 inches  
**Max Log Weight:** 100 pounds  
**Max Log Diameter:** 12 inches

### CAUTION:

**FOR YOUR OWN SAFETY READ INSTRUCTION MANUAL COMPLETELY AND CAREFULLY BEFORE OPERATING. Failure to follow all instructions as listed below may result in electrical shock, fire, and/or serious personal injury.**

### SAFETY INSTRUCTIONS

**WARNING:** Improper use of a log splitter can cause injury and death.

Keep the work area clean and well lit.

Do not use this tool in damp or wet conditions. Do not expose it to rain.

Store idle equipment. When the tool is not in use, store it in a dry location.

Do not attempt to use the tool for a purpose it was not intended to be used for. Do not force the tool to do work it was not meant to do.

Do not overreach when using the tool. Keep proper footing and balance at all times.

Stay alert while operating the tool. Do not operate the tool under the influence of drugs or alcohol.

For warranty purchases, please keep your dated proof of purchase. File or attach to the manual for safekeeping.

Check for damaged or misaligned parts before using the splitter. Do not use the splitter if it is damaged and have it serviced before use.

Keep both hands away from edge plate during use. Wedge can cut through sin and break bones.

Wear safety glasses to avoid eye injury from pieces of log that may fly out while splitting.

High pressure fluid can inject under skin resulting in serious injury. Make sure all fittings are tight before applying pressure. Relieve system pressure before servicing. Do not check for leaks with hand. Use a piece of cardboard to check for leaks. If skin injection occurs, seek immediate treatment.

Serious injury or death can occur if splitter is improperly towed.

Do not ride or transport cargo on the splitter. Drive with the splitter securely attached. Turn off the vehicle before leaving the splitter unattended. Choose a level surface to operate the splitter and block the wheels to prevent rolling.

Position muffler at least 7 feet away from combustible objects.

Stop the engine before adding fuel and keep heat, sparks and flames away.

Do not add fuel while the engine is still running or hot.

Use an approved container to add fuel to the splitter. Do not pump fuel directly into the splitter at a gas station.

Do not change or add to the exhaust system, fuel tanks or fuel lines.

Check for fuel leaks before use.

## **OPERATING INSTRUCTIONS**

- 1) Load a log onto the beam and against the endplate.
- 2) Make sure hands are clear of the splitter.
- 3) Push control valve handle forward by one hand to split log.
- 4) Push control valve handle backward by one hand to return wedge to original position.
- 5) Clear split wood from work area.

## **MAINTENANCE**

Before performing maintenance, ensure the engine is turned off and move the control handle forwards and backwards to relieve hydraulic pressure.

After performing maintenance, ensure all guards, shields and safety features are put back in place. Failure to do so can result in injury.

Refer to the engine owner's manual for engine maintenance.

Inspect for exposed wire mesh and leaks on the hoses before each use. Replace all worn and damaged hoses before starting engine.

Inspect for cracks and leaks in the hydraulic fittings before each use. Replace all damaged fittings before starting engine.

Check for loose nuts and bolts before each use. Tighten loose nuts and bolts before use.

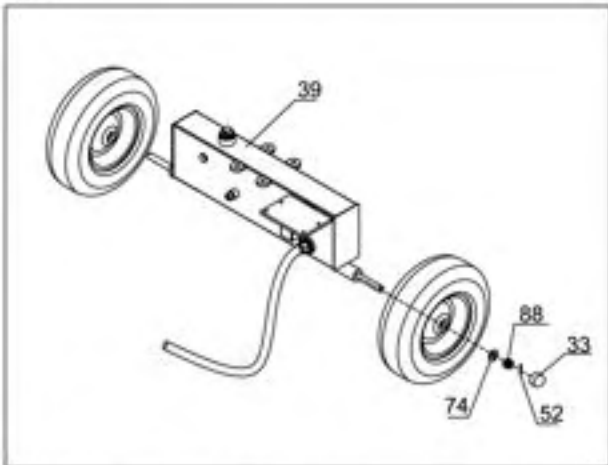
Apply grease to beam surface before each use.

Clear debris from moving parts before each use.

## ASSEMBLY

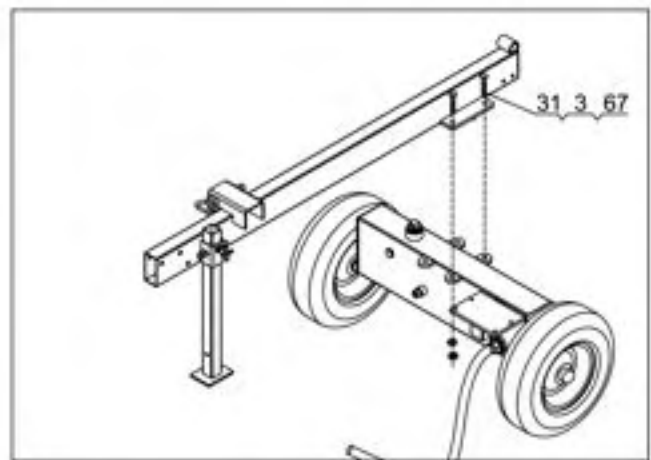
### Step 1: Wheel Assembly

Fix the wheel to the oil tank (#39) axle by a flat washer  $\text{\O}20$  (#74), slotted nut M16x1.5 (#88), cotter pin  $\text{\O}4$ x36 (#52) and attach the axle cap (#33).



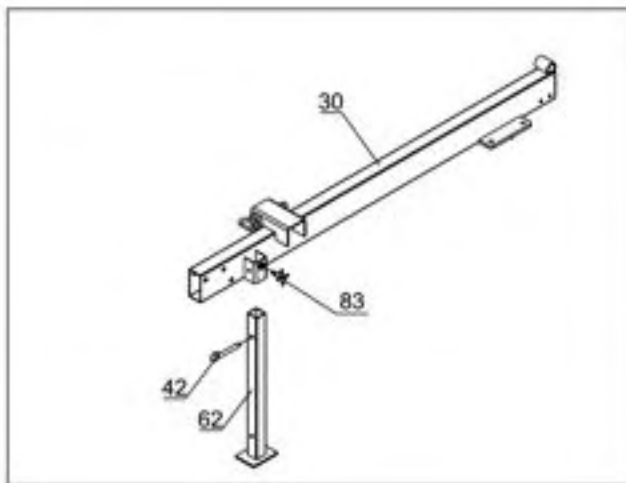
### Step 3: Attach Tow bar to Oil Tank

Fix the tow bar to the oil tank by using 4 sets of hex bolt M12x40 (#31), flat washer  $\text{\O}12$  (#3) and lock nut M12 (#67).



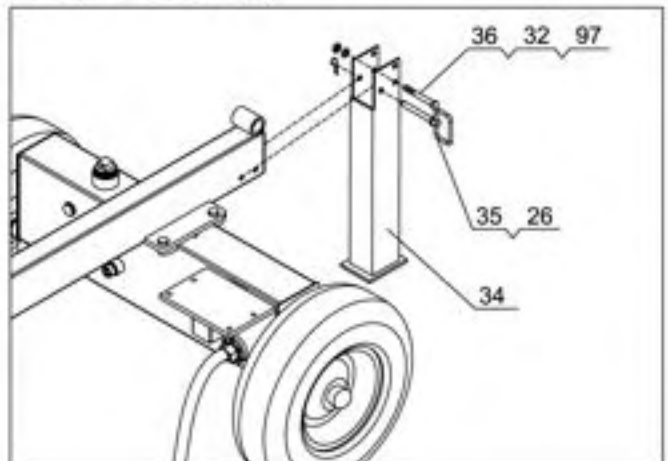
### Step 2: Attach Tow bar and Support Leg

Fix the support leg (#62) to the tow bar (#30) by a pin (#42) and handle wheel (#83).



### Step 4: Assemble Rear Support Leg

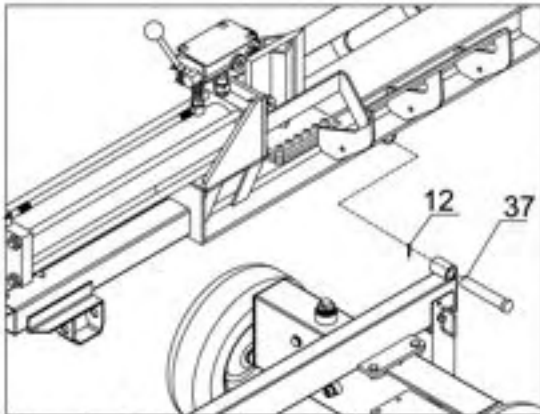
Fix the rear support leg (#34) to the tow bar by using hex bolt M10x75 (#36), lock nut M10 (#32), flat washer  $\text{\O}10$ (#97). Slide in hitch pin (#35) and secure with R pin $\text{\O}3$ x55 (#26).



## ASSEMBLY (con'd)

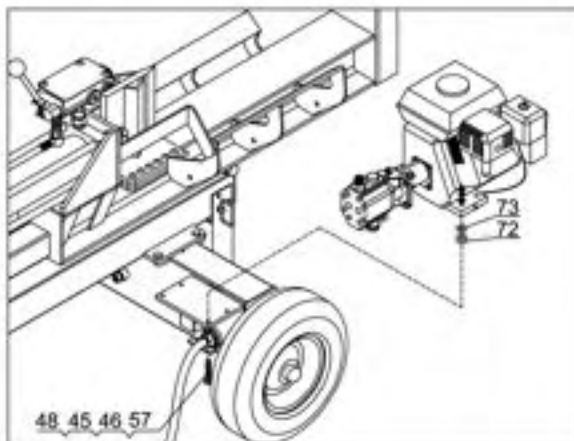
### Step 5: Attach Hydraulic Cylinder Log Cradle

Assemble the hydraulic cylinder to the tow bar, secure with cotter pin Ø4x40 (#12) & hitch pin (#37).



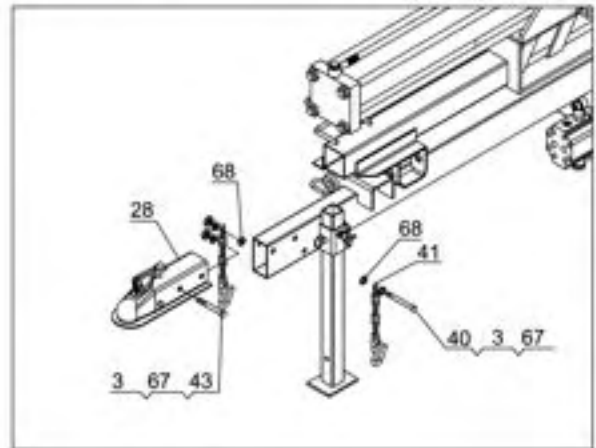
### Step 6: Attach Engine

1. Assemble the engine to the oil tank by using hex bolt M8x75 (#48), flat washer Ø8 (#45), lock washer Ø8 (#46) and lock nut M8 (#57).
2. Place 4 polyurethane blocks (#72) and big flat washer Ø10 (#73) between the engine and mounting plate.



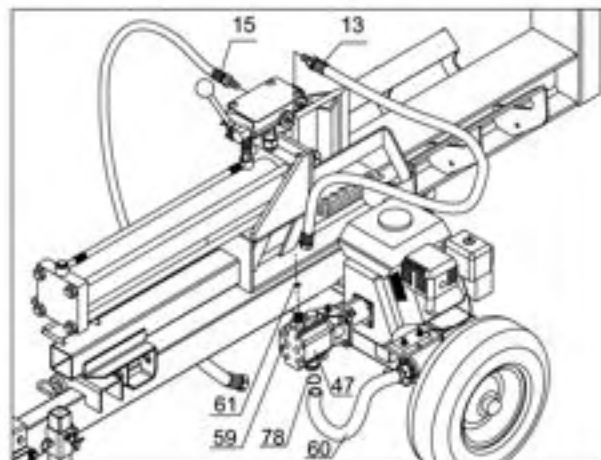
### Step 7: Assemble Ball Coupler & Chain

1. Attach the coupler (#28) to the tow bar by using hex bolt M12x80 (#43), flat washer Ø12 (#3) and lock nut M12 (#67).
2. Attach two chains (#41) to the tow bar by using hex bolt M12x90 (#40), flat washer Ø12 (#3), lock nut M12 (#67) and thick flat washer Ø12 (#68).



### Step 8: Attach Hydraulic Hoses

1. Thread the outlet connector (#59) to the top of the gear pump (#47). Use Teflon tape to ensure tight fit.
2. Place an O ring (#61) onto the exposed threads of the outlet connector. Then attach hose (#13) to outlet connector. Then fix the other end of hose (#13) to the control valve.
3. Attach hose (#15) to the port on the oil tank. Place an O ring (#61) on the port and tighten the hose using Teflon tape. Then fix the other end of hose (#15) to the control valve.
4. Attach the oil pipe (#60) to the bottom of the gear pump (#47) by the clamp (#78).



---

## **Limited Manufacturer Warranty**

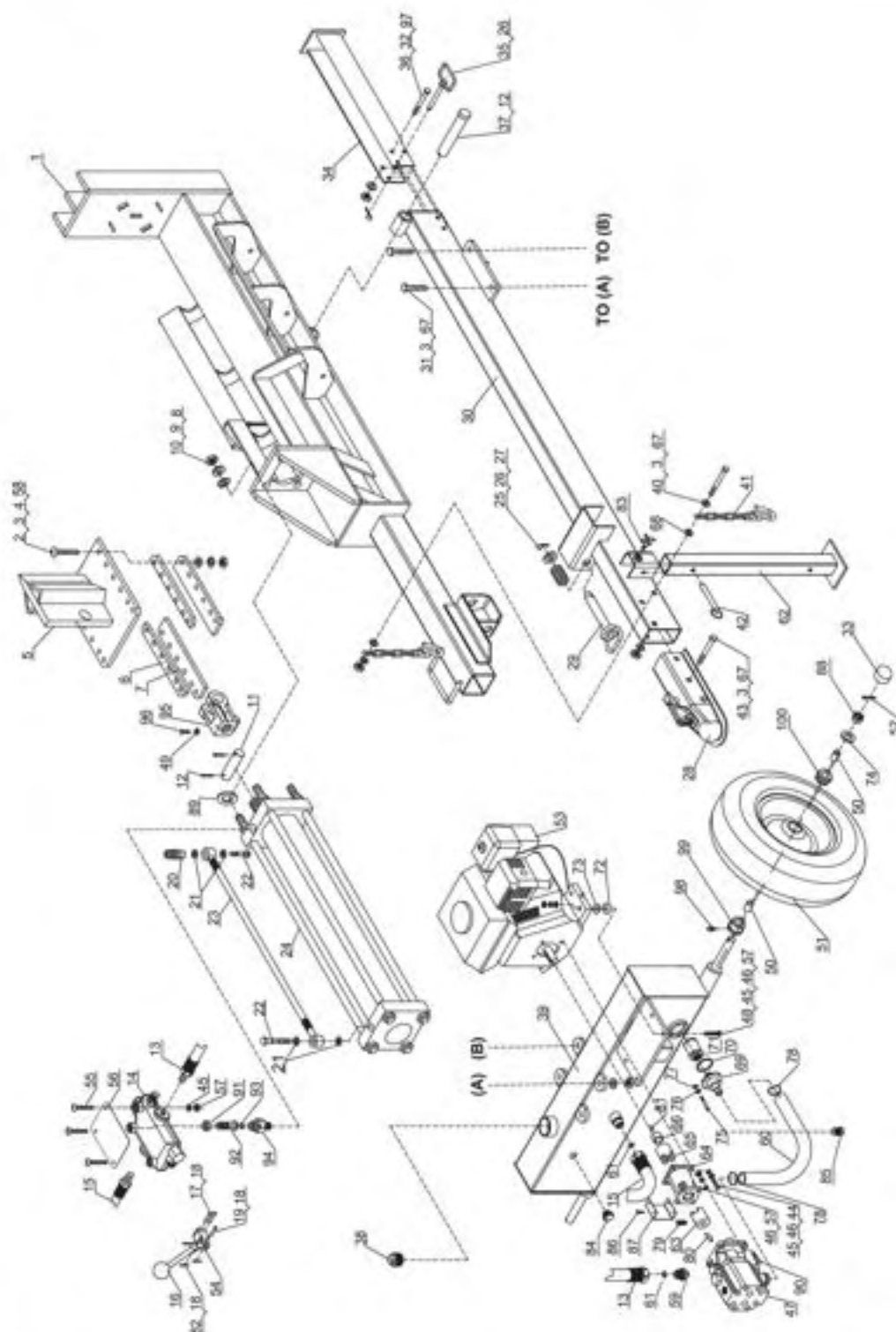
*North American Tool (NAT) Industries makes every effort to ensure that this product meets high quality and durability standards. NAT warrants to the original retail consumer a 1-year limited warranty from the date the product was purchased at retail and each product is free from defects in materials. Warranty does not apply to defects due directly or indirectly to misuse, abuse, negligence, or accidents, repairs or alterations, or a lack of maintenance. NAT shall in no event be liable for death, injuries to persons or property, or for incidental, special, or consequential damages arising from the use of our products. To receive service under warranty, the original manufacturer part must be returned for examination by an authorized service center. Shipping and handling charges may apply. If a defect is found, NAT will either repair or replace the product at its discretion.*

## **DO NOT RETURN TO STORE**

For Customer Service:

Email [feedback@homier.com](mailto:feedback@homier.com) or Call 1-800-348-5004

### Parts List



## Call 1-800-348-5004 for assistance or replacement parts

Please provide the following information:

- Model number
- Part description and number as shown in parts list
- Serial number (if any)

Address any correspondence to:

North American Tool Industries  
84 Commercial Rd  
Huntington, IN 46750

Ref#	Description	Qty	Ref#	Description	Qty
1	Beam	1	38	Screw ZG1"	1
2	Bolt M12x55	12	39	Oil Tank	1
3	Flat Washer Ø12	20	40	Bolt M12x90	1
4	Thick Nut M12	12	41	Safety Chain with Hook	2
5	Wedge Slide	1	42	Pin	1
6	Spacer	2	43	Bolt M12x80	2
7	Plate	2	44	Bolt M8x25	4
8	Lock Washer Ø18	4	45	Flat Washer Ø8	11
9	Flat Washer Ø18	4	46	Lock Washer Ø8	12
10	Nut M18	4	47	Gear Pump	1
11	Wedge Pin	1	48	Bolt M8x75	4
12	Split Pin Ø4x40	3	49	Nut M8	1
13	Hydraulic Hose (Valve-Pump)	1	50	Composite bearing	4
14	Control Valve	1	51	Wheel / Tire Assembly	2
15	Hydraulic Hose (Valve-Oil Tank)	1	52	Split Pin Ø4x36	2
16	Valve Handle	1	53	Engine	1
17	Pin Ø5x25	1	54	Valve Handle Connector	1
18	Cotter Pin Ø2x10	3	55	Round-head Bolt M8x45	3
19	Pin 5x16	1	56	Plate	1
20	Valve A Joiner	1	57	Lock Nut M8	11
21	Combination Washer Ø14	4	58	Lock Washer Ø12	12
22	Bolt Connector	2	59	Outlet Connector of Pump	1
23	Hydraulic Hose (Valve-Cylinder)	1	60	Oil Pipe	1
24	Cylinder	1	61	O ring Ø16x2.4	2
25	Flat Washer Ø22	1	62	Front Support Leg	1
26	R Pin Ø3x55	2	63	Gear Pump Connector	1
27	Spring	1	64	Gear Pump Stand	1
28	2" Coupler	1	65	Engine Connector	1
29	Hitch Pin	1	66	Engine Bushing	1
30	Tow Bar	1	67	Lock Nut M12	7
31	Bolt M12x40	4	68	Thick Flat Washer Ø12	2
32	Lock Nut M10	1	69	Filter Fix Plate	1
33	Axle Cap	2	70	Rubber Washer	1
34	Rear Support Leg	1	71	Filter	1
35	Hitch Pin	1	72	Polyurethane Block	4
36	Bolt M10x75	1	73	Big Flat Washer Ø10	4
37	Hinge Pin	1	74	Flat Washer Ø20	2

Parts List

Ref#	Description	Qty	Ref#	Description	Qty
75	Bolt M6x20	6	88	Slotted Nut M16x1.5	2
76	Lock Washer Ø6	6	89	Adjustable Washer	
77	Flat Washer Ø6	6	90	Bolt M8x30	4
78	Clamp	2	91	Nut	1
79	Screw M6x10	1	92	Valve B Joiner	1
80	Semicircular Key	1	93	O Ring Ø20x2.4	1
81	Flat Key	1	94	Front Cover Connector	1
82	Pin 5x22	1	95	Piston-Rod Connector	1
83	Handwheel	1	96	Bolt M8x20	1
84	Oil Scale	1	97	Flat Washer Ø10	1
85	Oil Plug	1	98	Oil Cup M6	2
86	Hex Bolt M5x10	4	99	Inside Bushing	2
87	Connector Cover	1	100	Outside Bushing	2