

# DOSKO®

POWERED by  
**HONDA™**

COMMERCIAL  
RENTAL GRADE

### 54" Chute With Deflector

Chute features adjustable angle deflector that allows material to be blown into the back of trucks or trailers

13-21T-13H

### Wide Opening

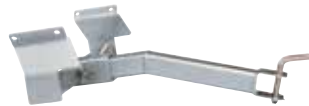
5.5" x 5" infeed opening allows you to easily fit max 4" diameter branches and brush

### Fold Down Handles

Handles fold down for more compact transport and storage

### Mechanical Belt Tensioning System

System allows for easy starts without the use of a centrifugal clutch



Optional Tow Bar Package  
Item # 2964051

### Narrow Width

Narrow width of just 32" to fit through a standard gate



### Brush Chipper Features:

- Double edge, reversible knife
- 4-way reversible bed knife (anvil) is 5.5" long x 3/16" thick for four fresh cutting edges in one
- 21" diameter and 0.5" thick disc
- Long-lasting Dodge greasable bearings are made in the USA
- Towable behind lawn and garden tractor, ATV or UTV with optional tow package (**NOT road towable**)
- 15" turf tires



SEE EQUIPMENT IN ACTION  
AT [DOSKO.COM](http://DOSKO.COM)

### Brush Chipper

<b>ITEM NUMBER</b>	<b>13-21T-13H</b>	
<b>RETAIL</b>	<b>\$5,999</b>	
<b>ENGINE</b>	<b>Model</b>	Honda GX390
	<b>Displacement</b>	389cc
	<b>Fuel Capacity</b>	1.6 gal
<b>DISC SYSTEM</b>	<b>Flywheel</b>	3/4" Thick x 21" Diameter
	<b>Disc RPM</b>	2,274 RPM
	<b>Knives (Double Edge)</b>	(1) 3/8" x 2-1/4" x 6-1/2"
	<b>Belts</b>	4 PowerRated Gates (3L)
	<b>Ball Bearings, Shaft</b>	1.5" Diameter, Dodge 4-Bolt Flange
	<b>Bed Knife</b>	4-Sided, 1/2" x 3"
<b>FRAME</b>	<b>Dimensions</b>	44" L (Closed) x 32" W 60" H
	<b>Infeed Opening</b>	5.5" x 5"
	<b>Machine Weight</b>	350 lbs
<b>TRAILER</b>	<b>Axle</b>	Straight
	<b>Tires</b>	15" Turf Flat-Free
	<b>Tow Bar Package</b>	Optional (Item # 2964051)

### ACCESSORIES

ITEM #	DESCRIPTION	RETAIL
2964051.DOS	Tow Bar Package (NOT Road Towable)	\$380